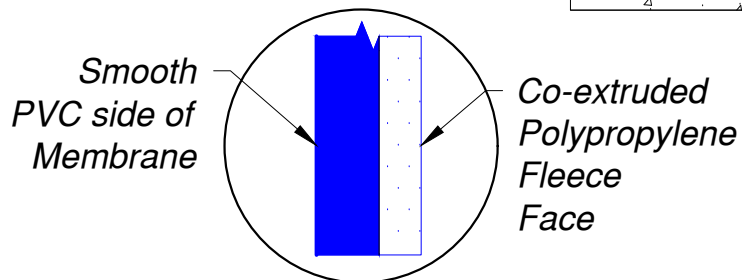
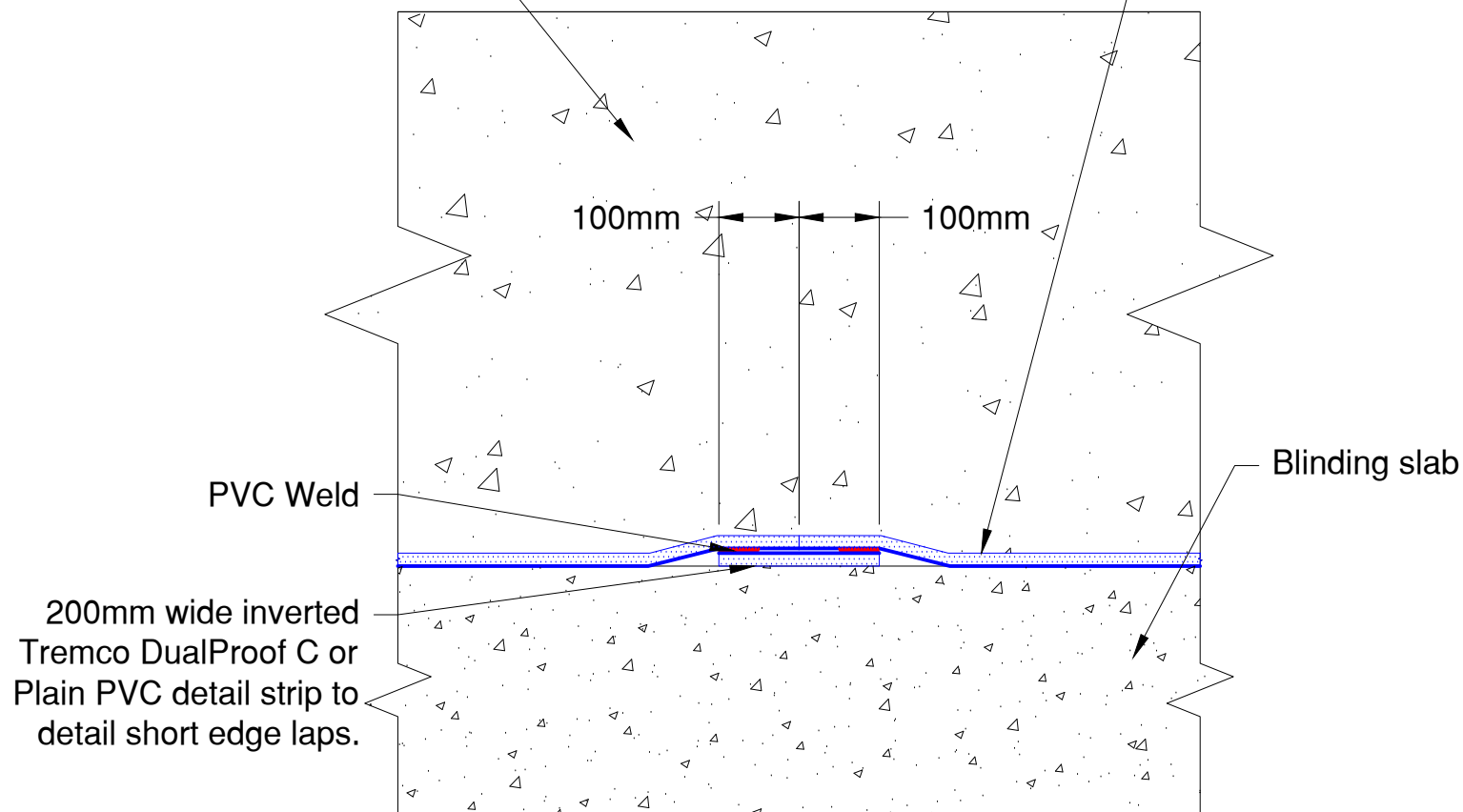


Slab on Grade  
(to engineers details)

Tremco DualProof C  
(fleece facing up)



DualProof C Membrane  
Cross-section

Note: Ensure that short edge laps are staggered by at least 300mm



www.tremco.com.au  
12/4 Southridge St, Eastern Creek, NSW 2766  
Phone : (02) 9638 2755 \* Fax: (02) 9638 2955

Project: DualProof C Below Slab-on-Grade

Detail: Short Edge Lap - Horizontal

This detail is intended for conceptual purposes only.

Drawn by: AH

Checked by: XX

Scale: N.T.S

Sheet Number:

Date: 05/06/2025

File Name:

DualProof C - Short  
Edge Lap - Horizontal

Rev #:

04