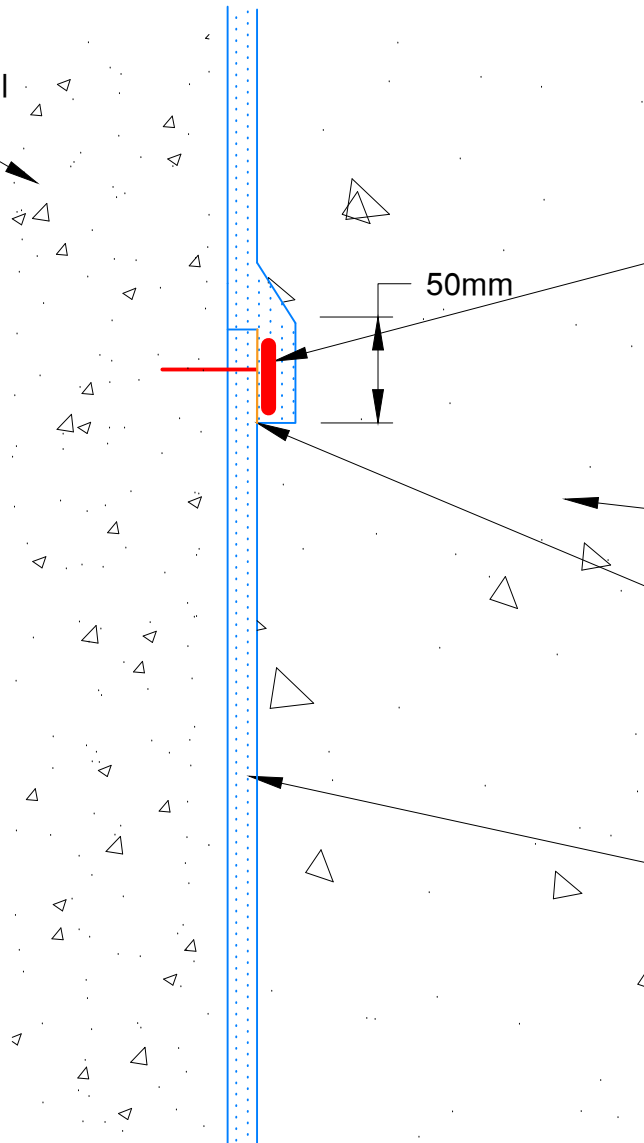


Shoring Wall



Washer head, substrate specific adhesive, to be fixed through membrane selvedge only

50mm

Shotcrete or reinforced concrete wall (to engineers details)

Welded lap at long edge selvedge. Mechanical fixings are only permitted through base layer of long edge selvedge

Tremco DualProof C (fleece facing installer)



www.tremco.com.au
12/4 Southridge St, Eastern Creek, NSW 2766
Phone : (02) 9638 2755 * Fax: (02) 9638 2955

Project: DualProof C Below Slab-on-Grade

Detail: Long Edge Lap (Selvedge Lap) - Vertical

Sheet Number:

File Name:
DualProof C - Long
Edge Lap (Selvedge
Lap) - Vertical

Rev #:

01

This detail is intended for conceptual purposes only.

Drawn by: SP

Checked by: XX

Scale: N.T.S

Date: 22/11/2022