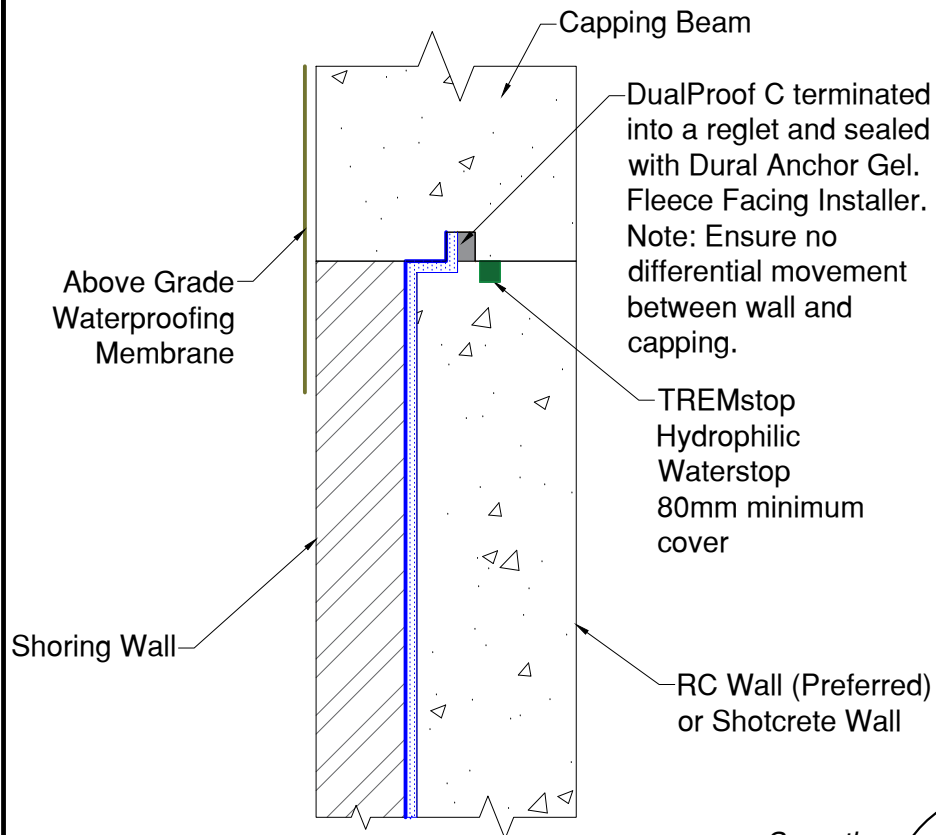
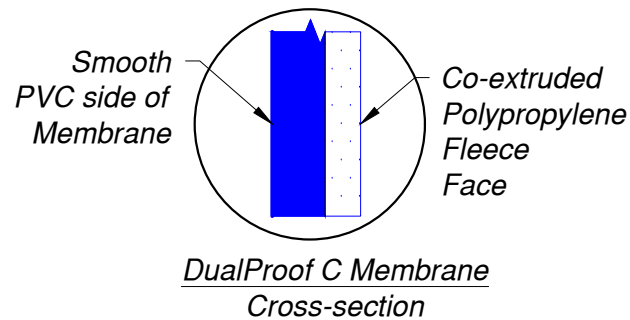
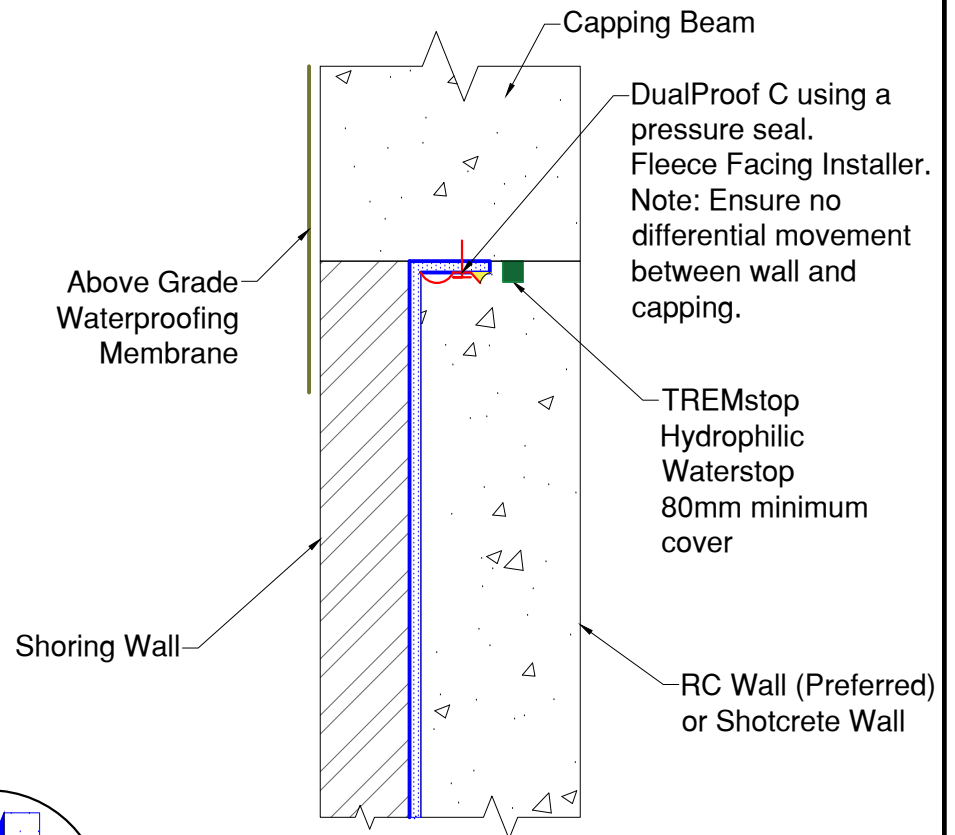


## DualProof C installed using a reglet



## DualProof C installed using a pressure bar



www.tremco.com.au  
12/4 Southridge St, Eastern Creek, NSW 2766  
Phone : (02) 9638 2755 \* Fax: (02) 9638 2955

Project: DualProof C  
Detail: Capping Beam

This detail is intended for conceptual purposes only.

Drawn by: AH

Checked by: XX

Scale: N.T.S

Sheet Number:

Date: 05/06/2025

File Name:  
DualProof C - Capping  
Beam

Rev #:

05