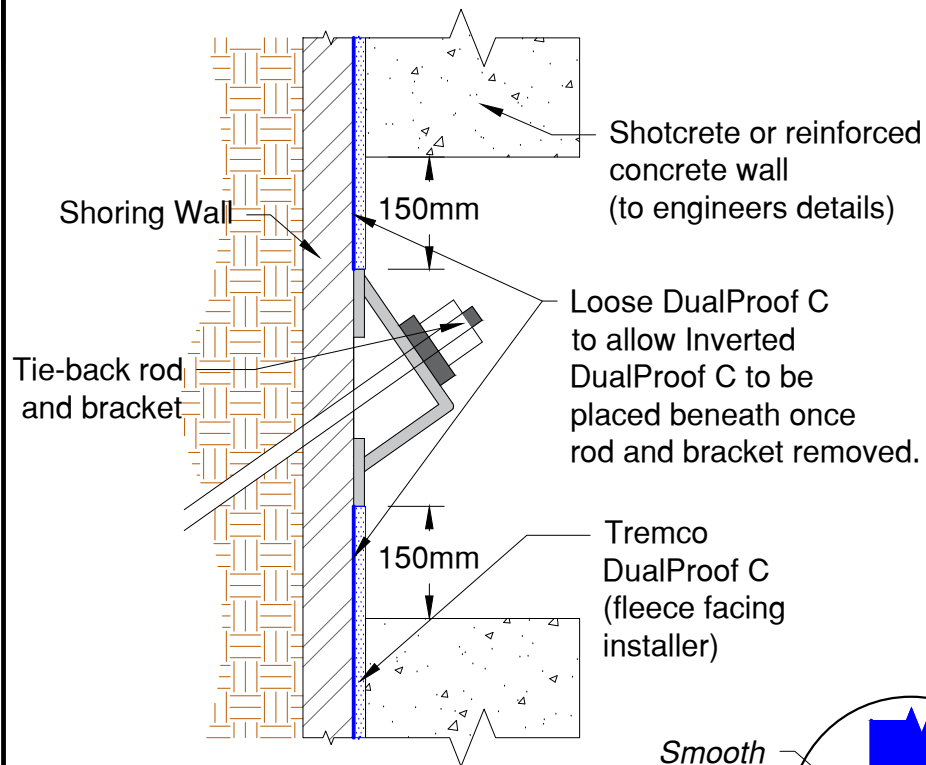
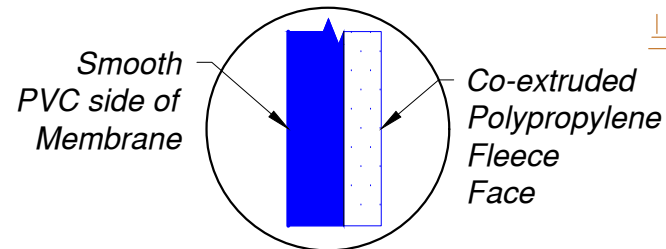
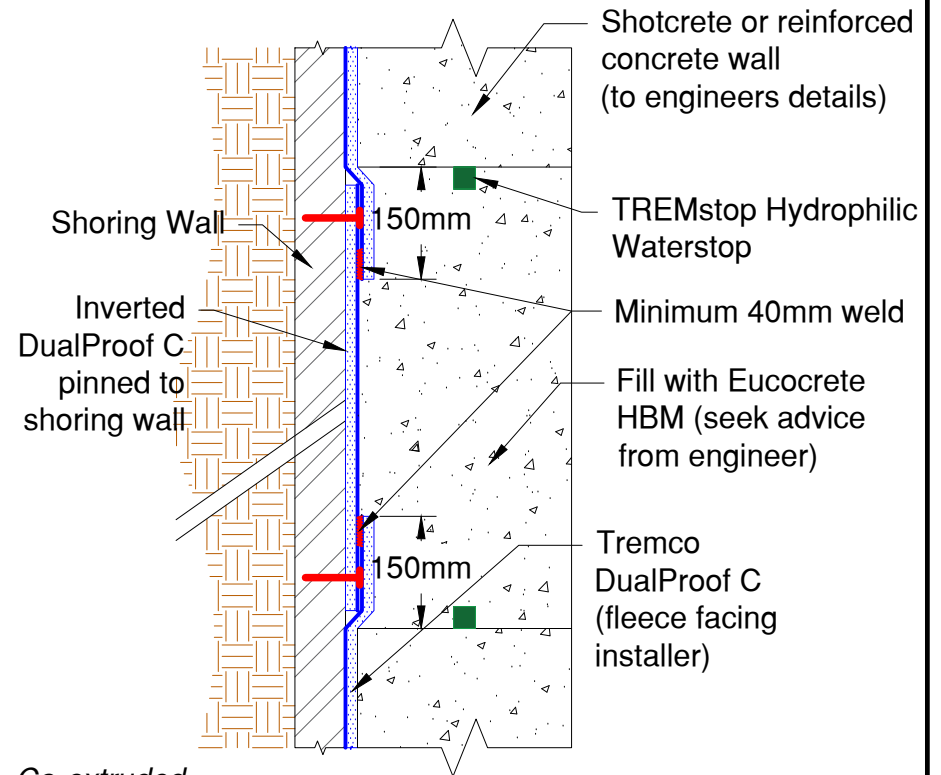


Before



After



DualProof C Membrane
Cross-section



www.tremco.com.au
12/4 Southridge St, Eastern Creek, NSW 2766
Phone : (02) 9638 2755 * Fax: (02) 9638 2955

Project: DualProof C
Detail: Blindside Wall at Detentioned Tie-Back

This detail is intended for conceptual purposes only.

Drawn by: AH

Checked by: XX

Scale: N.T.S

Sheet Number:

Date: 05/06/2025

File Name:
DualProof C -
Blindside Wall at
Detentioned Tie-Back

Rev #:

03