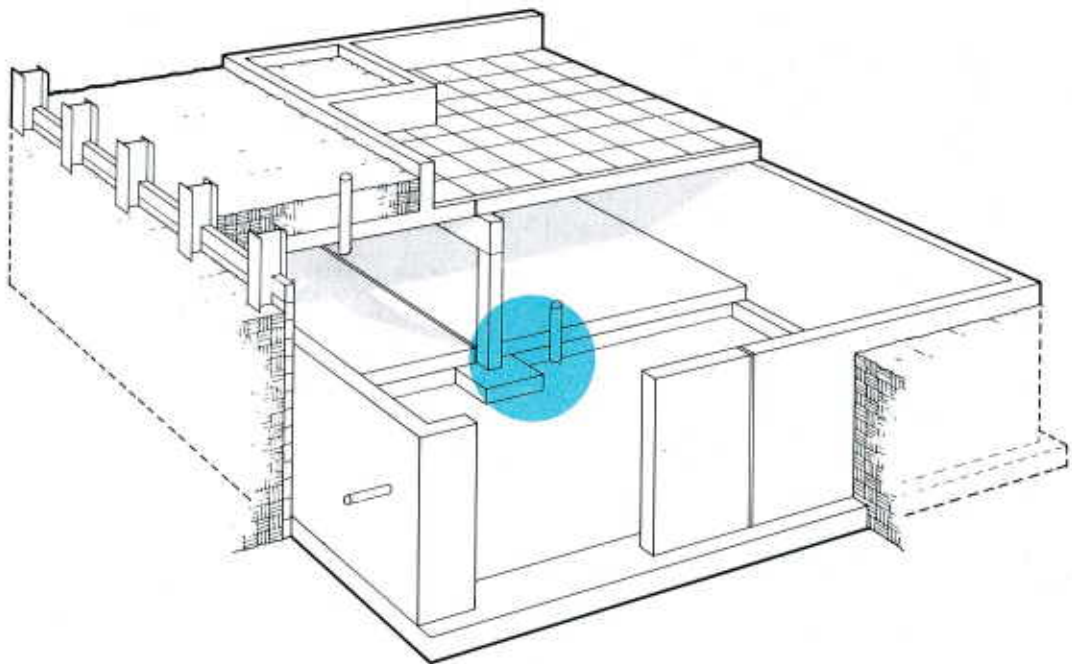


Paraseal Membrane Waterproofing Installation Manual

BELOW SLAB-ON-GRADE Section C



MAMECO INTERNATIONAL, INC.

4475 East 175th Street • Cleveland, Ohio 44128-3599

Telephone: (216) 752-4400 • (800) 321-6412 • FAX (216) 752-5005

Plant: Spearfish, South Dakota International Telephone: (605) 642-4787

An **RPM** Company

WHAT IS PARASEAL AND PARASEAL LG?

Paraseal is a two component membrane which combines the characteristics of the two most effective waterproofing materials available today; high density polyethylene (HDPE) and bentonite clay [approximately one lb./sq. ft. (4.8kg/m²)]. These two materials act in concert to produce a self-sealing, self-protecting waterproofing product which seals tightly to itself and any surface it comes in contact with when in the presence

of water. Paraseal LG is Paraseal with a protective layer of spun polypropylene imbedded in the bentonite component. This polypropylene protects the bentonite during installation while allowing the bentonite to seal against the substrate. Paraseal LG is specifically designed for use in blindside installations such as lagging walls, under floors, and elevator pits etc.

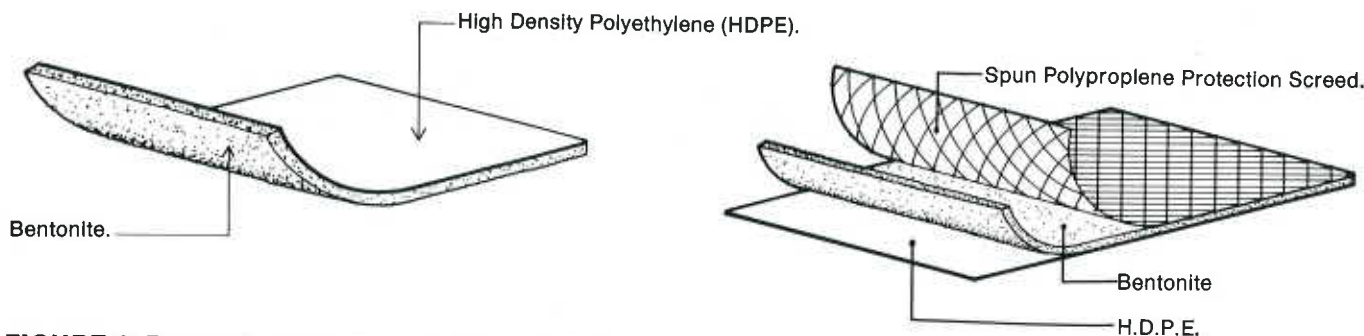


FIGURE 1: Paraseal and Paraseal/LG Membranes.

GENERAL INSTALLATION NOTES

1. Paraseal and Paraseal LG can be installed in conjunction with any of the four most typical slab on grade systems with equal performance (See Figures 2 thru 5). The slab on grade system selected and it's corresponding Paraseal installation is based on such factors as; water head, grade condition, climate, traffic by other trades, etc.
2. The grade should be prepared either by compacting original earth, compacting a granular base, or by installing a mud slab per Architects design.
3. Bentonite facing up is the preferred installation method however, if, for reasons of protection, the bentonite side is face down, a 6 mil (0.15mm) or heavier polyethylene sheet must first be installed on top of the earth or base.
4. When the bentonite side of Paraseal is facing up Paraseal LG is the preferred product to use.
5. All Paraseal installations below floor slab shall be lapped 3" (8cm) minimum at seams.
6. All seams shall be stapled every 8" (20cm) o.c. when the bentonite side is face up, and taped with Paramount permanent or temporary tape when the bentonite side is face down.
7. Waterproof around all pipe penetrations. (Details 12-15, also see Section K "Penetrations")
8. Prepare all expansion joints. (Details 10 & 11)
9. Prepare tie-in to existing floor and below floor waterproofing.
10. Terminate around floor perimeter. (Details 8 and 9)
11. When the bentonite side is facing up, protect the Paraseal from damage caused by reinforcing chairs.
12. Repair any damaged Paraseal prior to concrete placement, after steel reinforcement is tied in place.
13. Covering material over Paraseal must weigh at least 28 psf (137kg/m²).
14. Concrete placement should not be dropped over 2' (61cm) directly on Paraseal. Best to flow in place.
15. Install either Superstop or Parastop II at all construction joints when specified.

SLAB-ON-GRADE FLOOR SYSTEMS

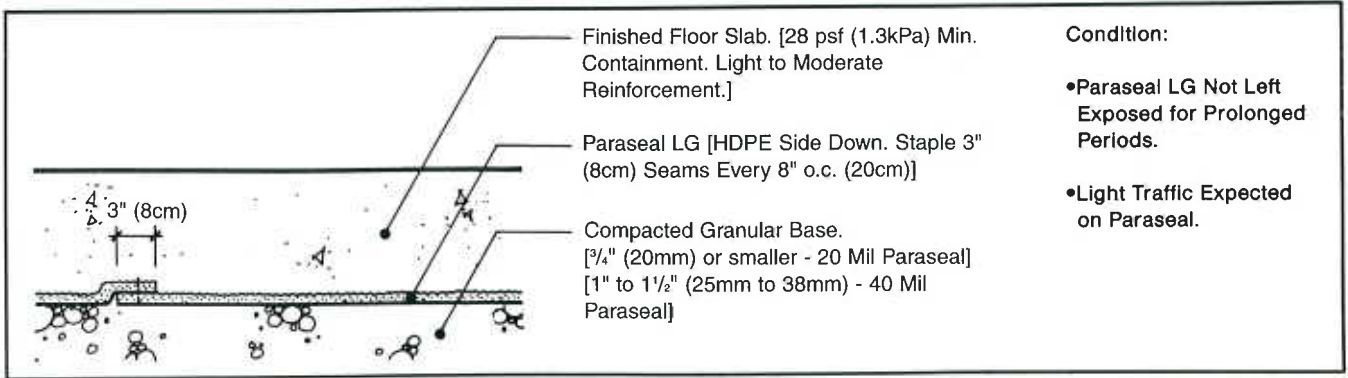


FIGURE 2: Simple Slab-System A (Also See Fig. 6).

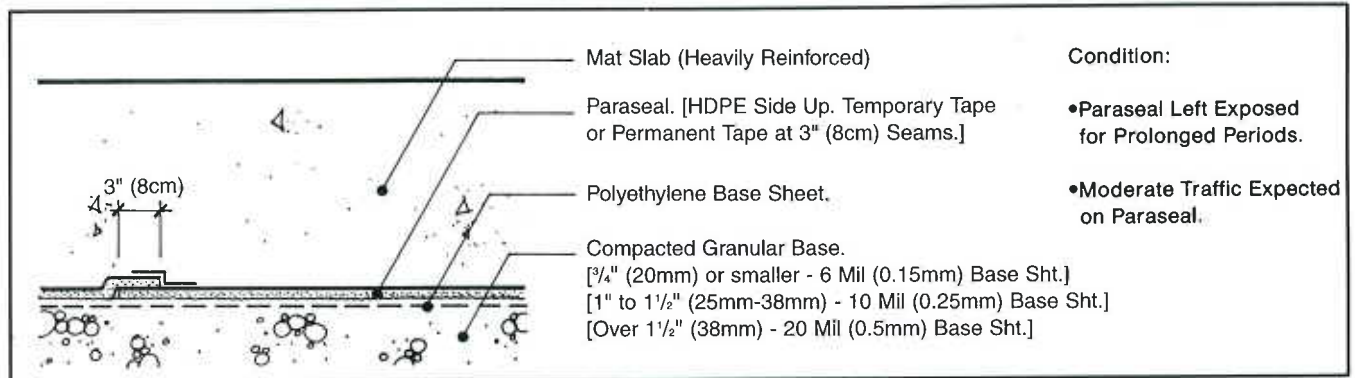


FIGURE 3: Mat Slab - System B (Also See Fig. 7).

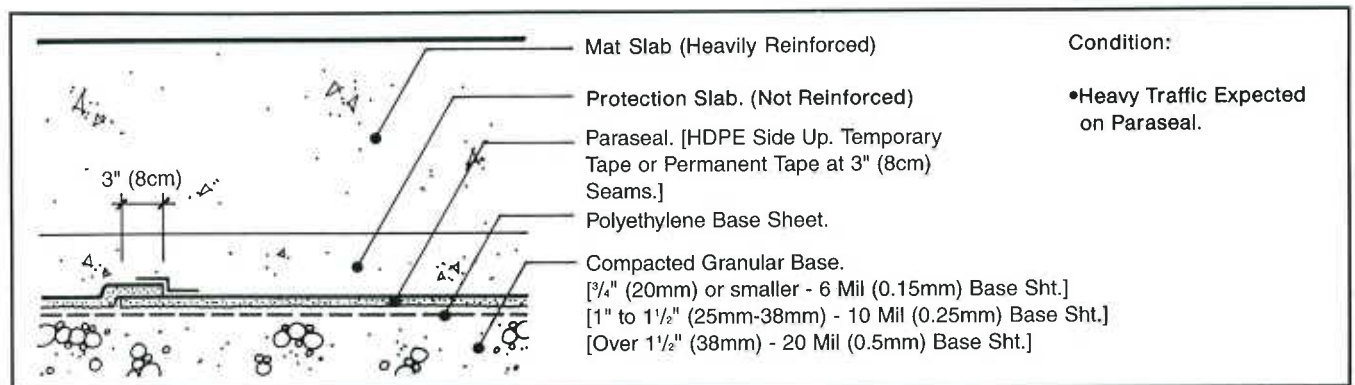


FIGURE 4: Mat Slab with Protect Slab - System C (Also See Fig. 8).

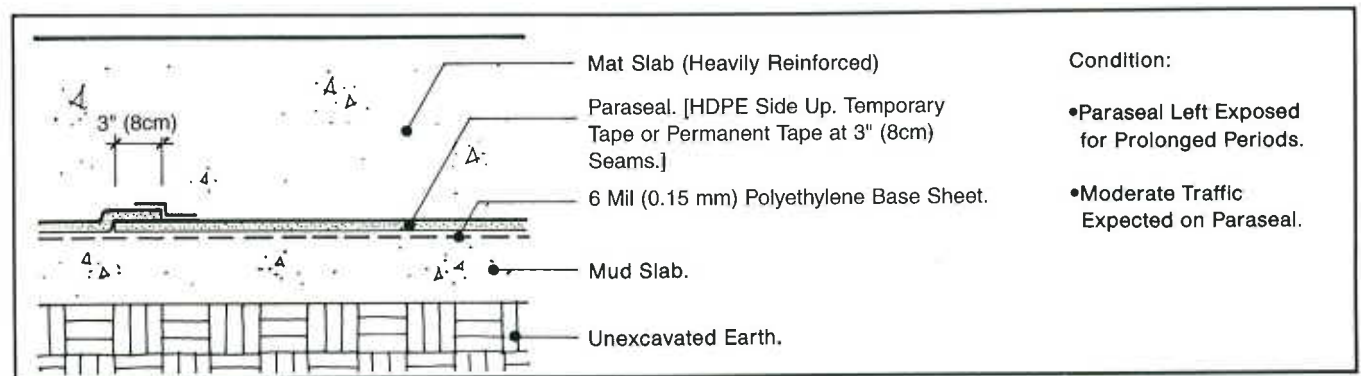


FIGURE 5: Mat Slab with Mud Slab - System D (Also See Fig. 9).

SLAB-ON-GRADE FLOOR SYSTEMS

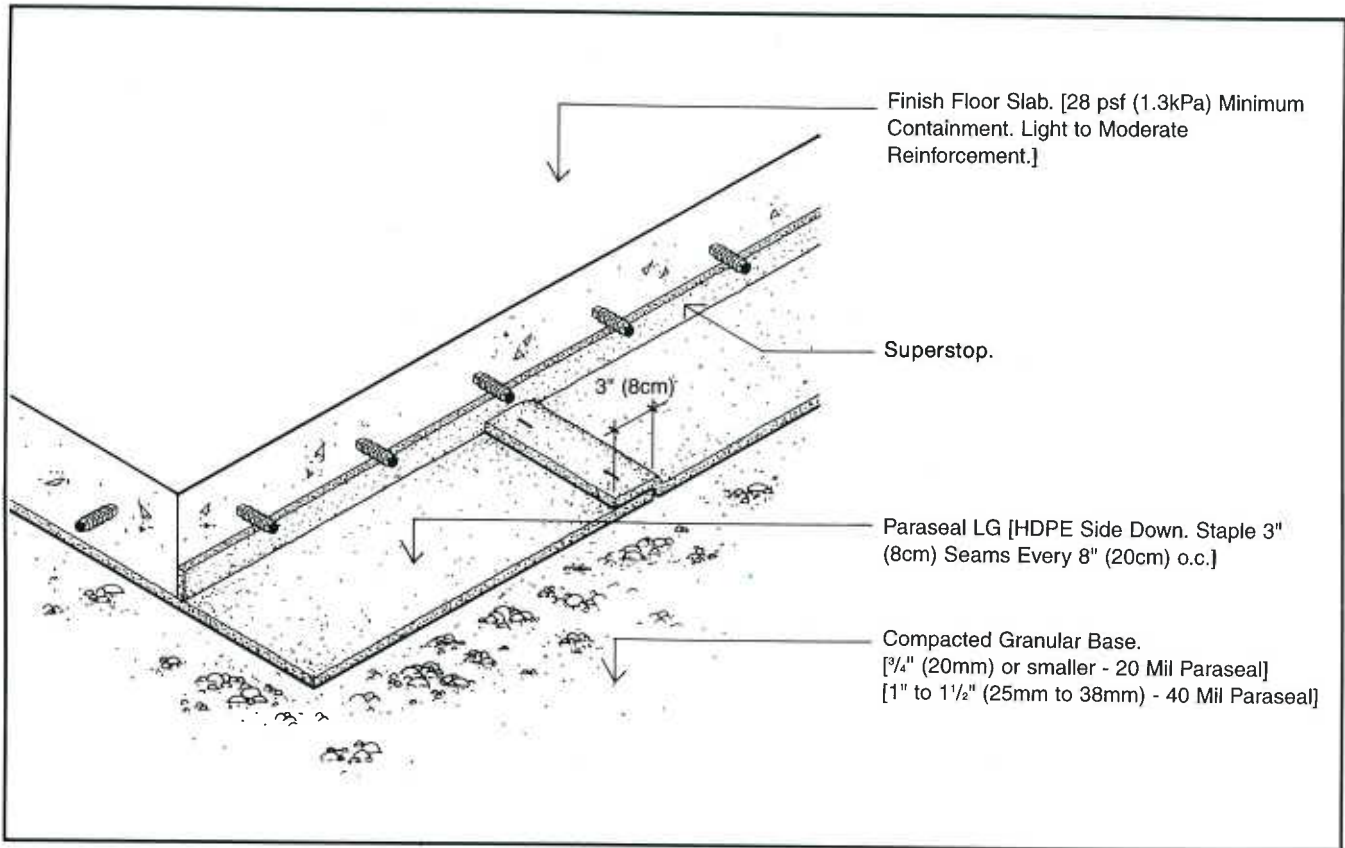


FIGURE 6: Simple Slab - System A (Also See Fig. 2).

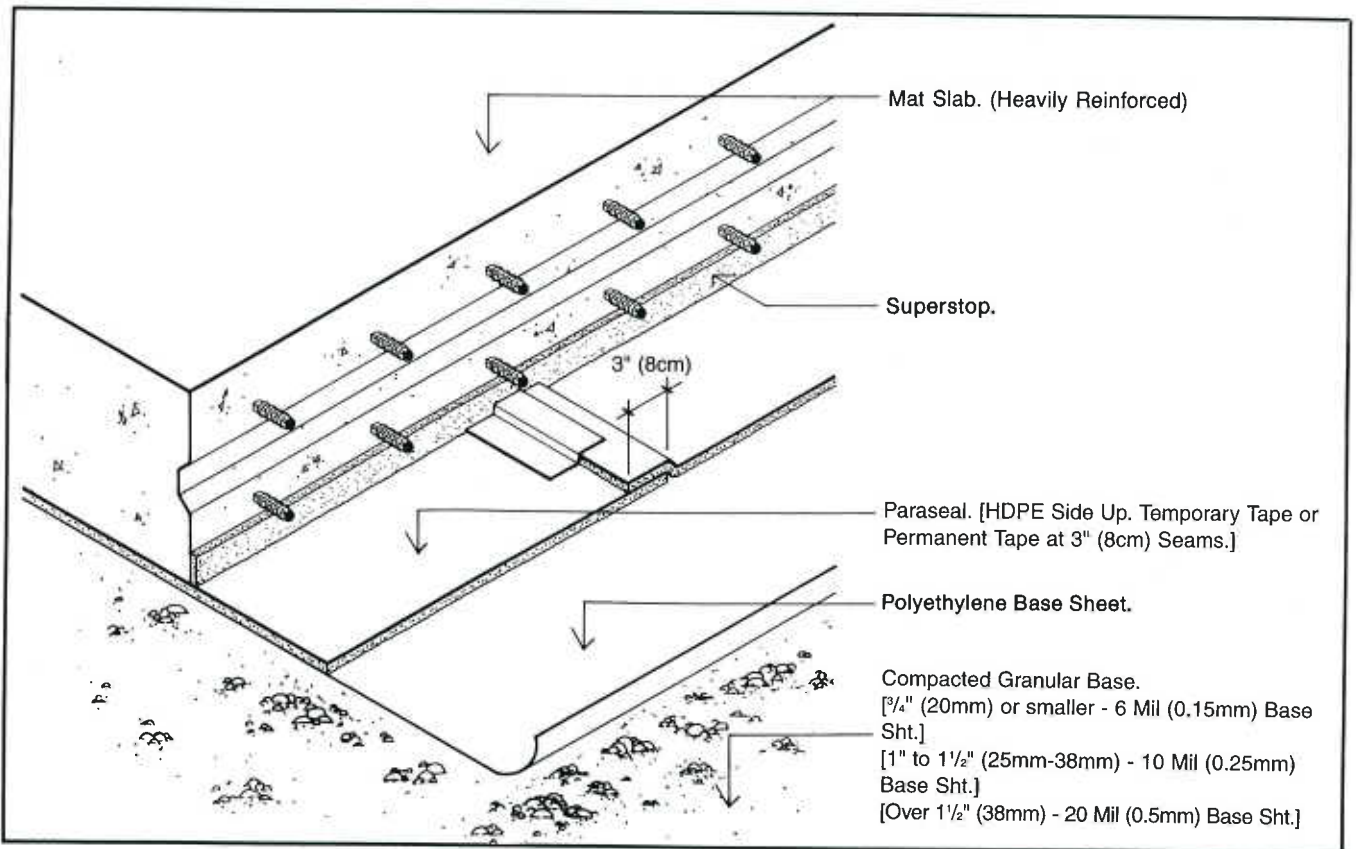


FIGURE 7: Mat Slab - System B (Also See Fig. 3).

SLAB-ON-GRADE FLOOR SYSTEMS

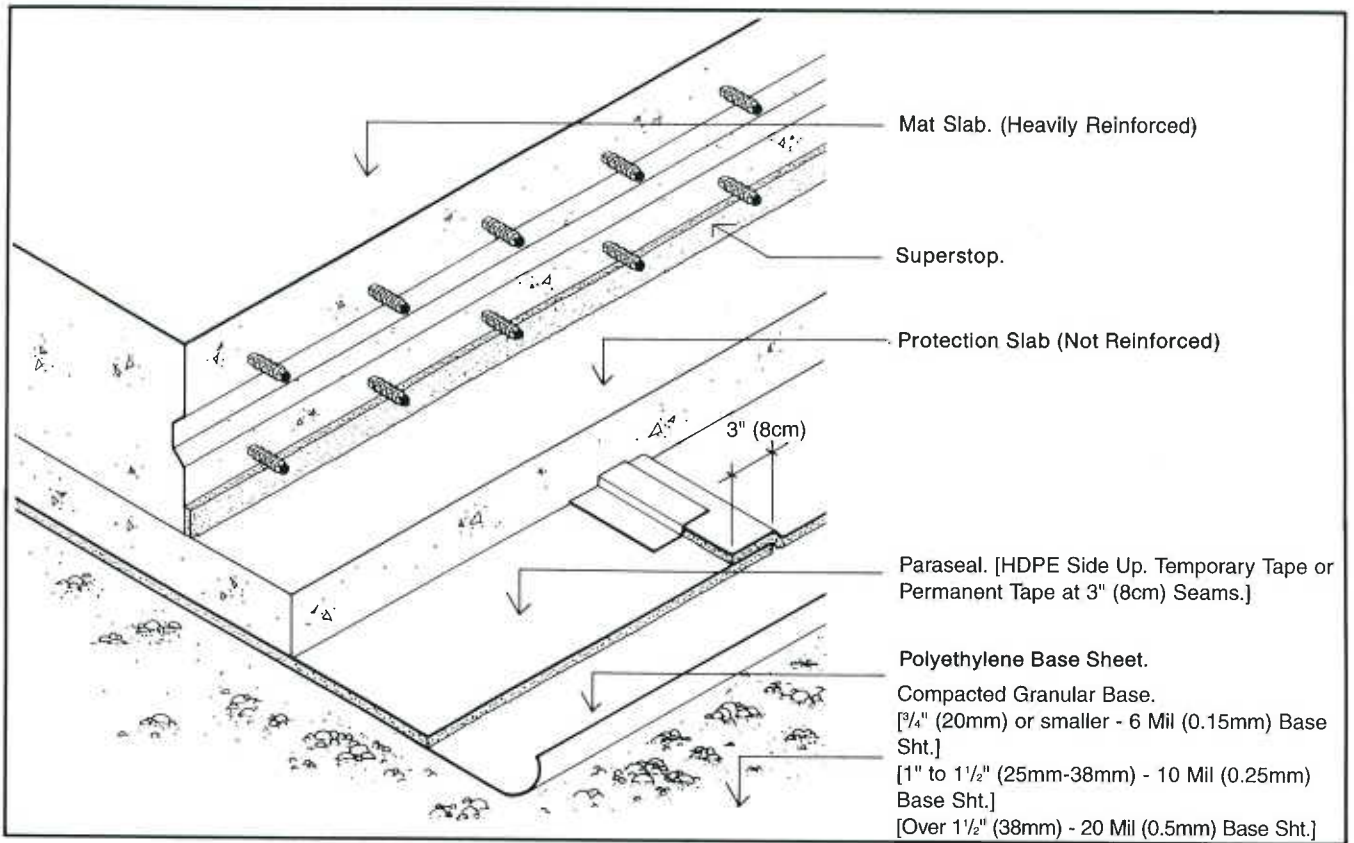


FIGURE 8: Mat Slab with Protection Slab - System C (Also See Fig. 4).

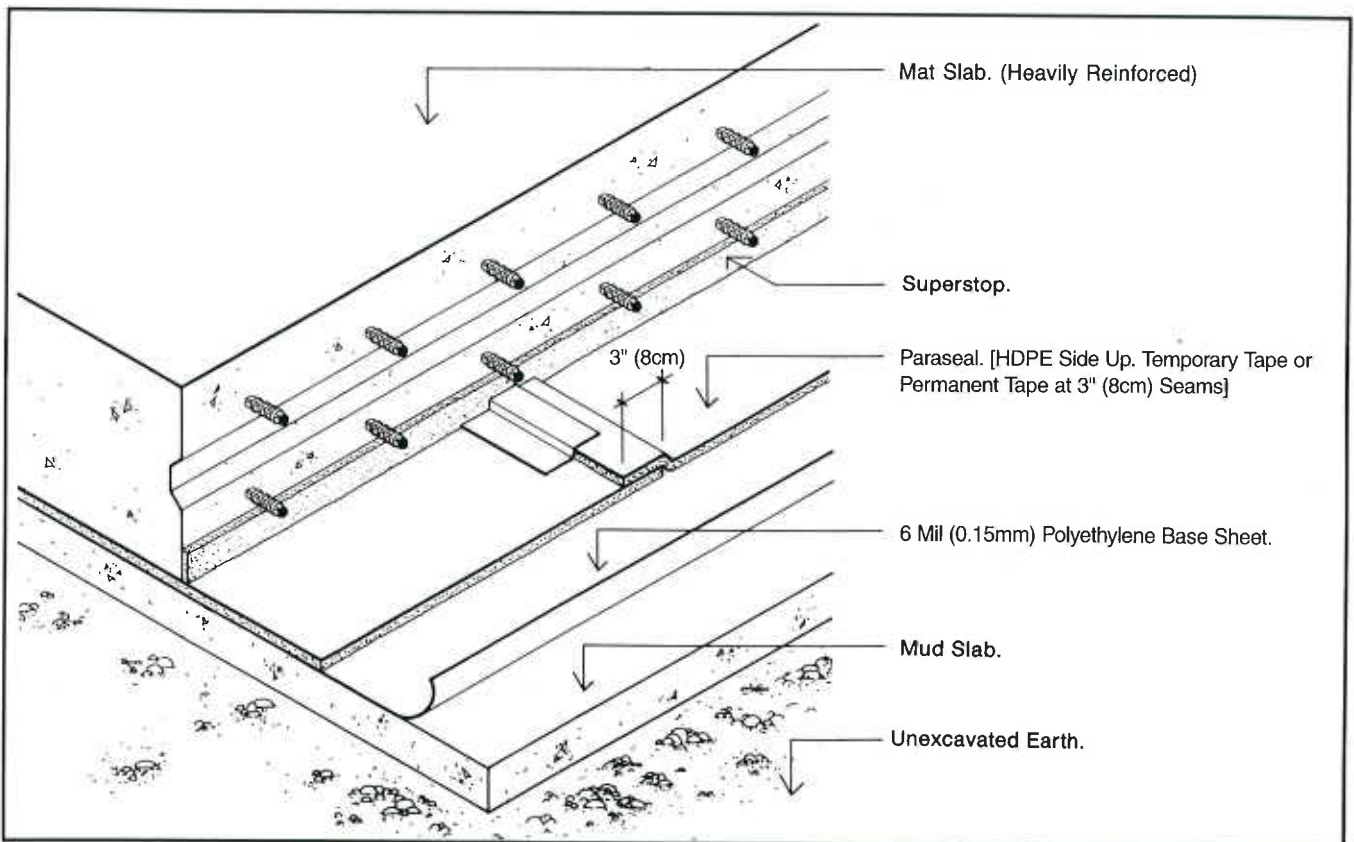
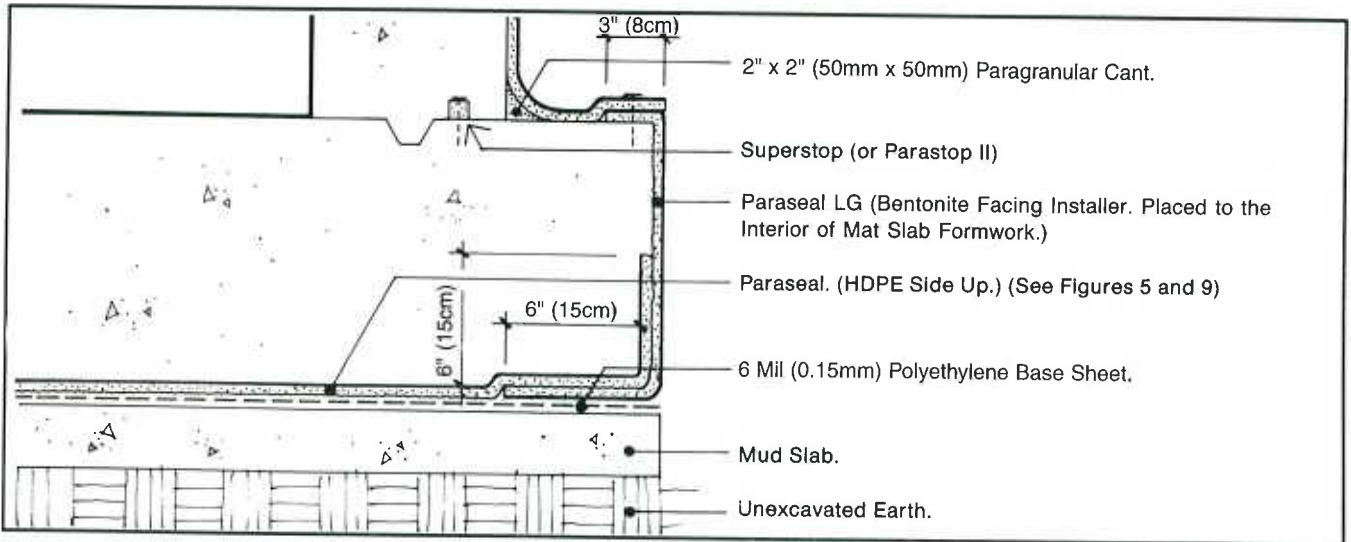
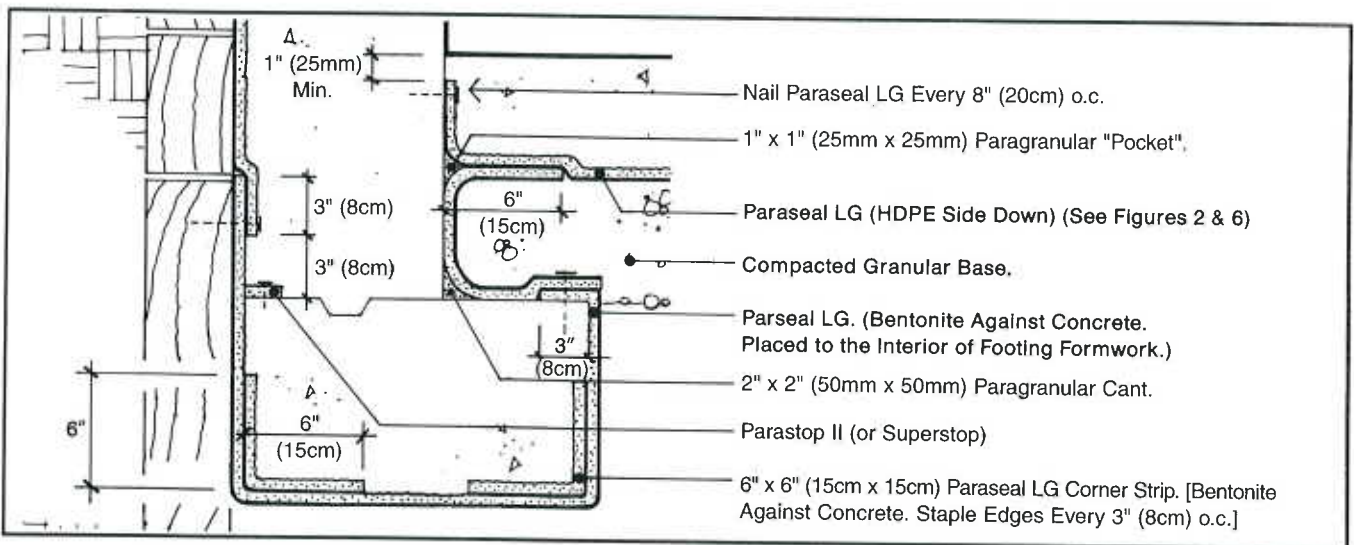


FIGURE 9: Mat Slab with Mud Slab - System D (Also See Fig. 5).

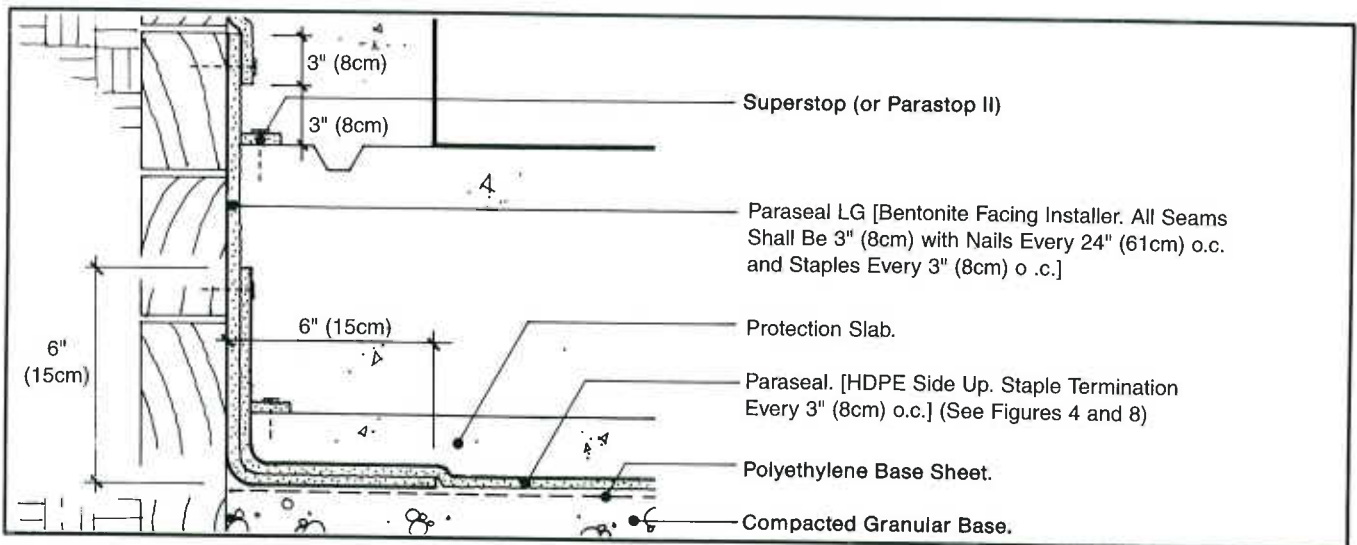
DETAILS



DETAIL 4: Tie-In Between Backfilled Wall and Mat Slab/Mud Slab.

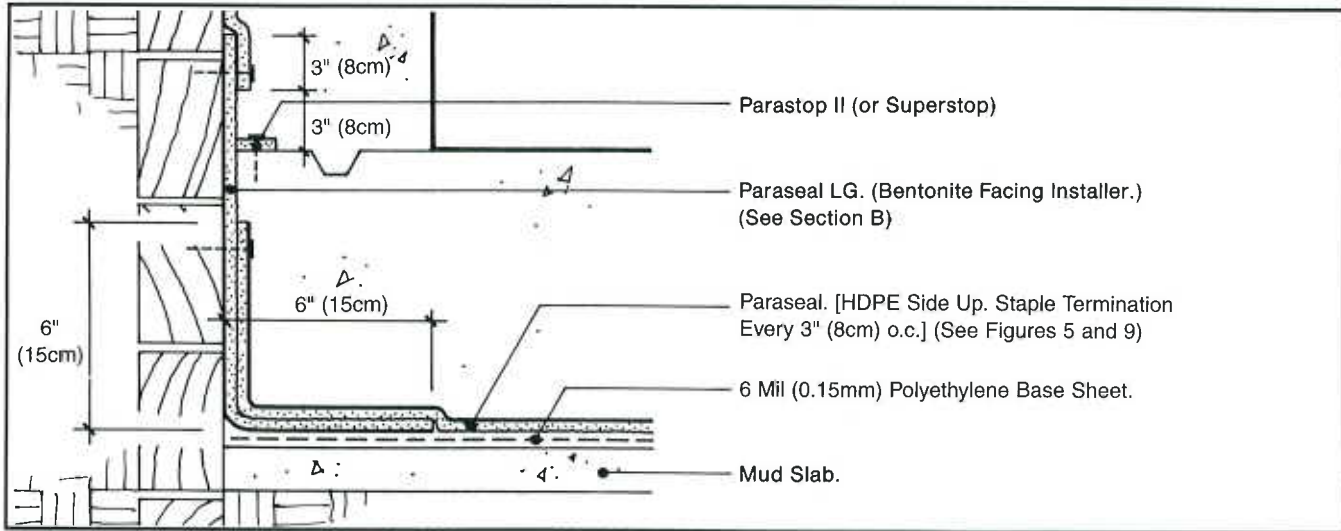


DETAIL 5: Tie-In Between Blindside Wall/Footing and Floor.

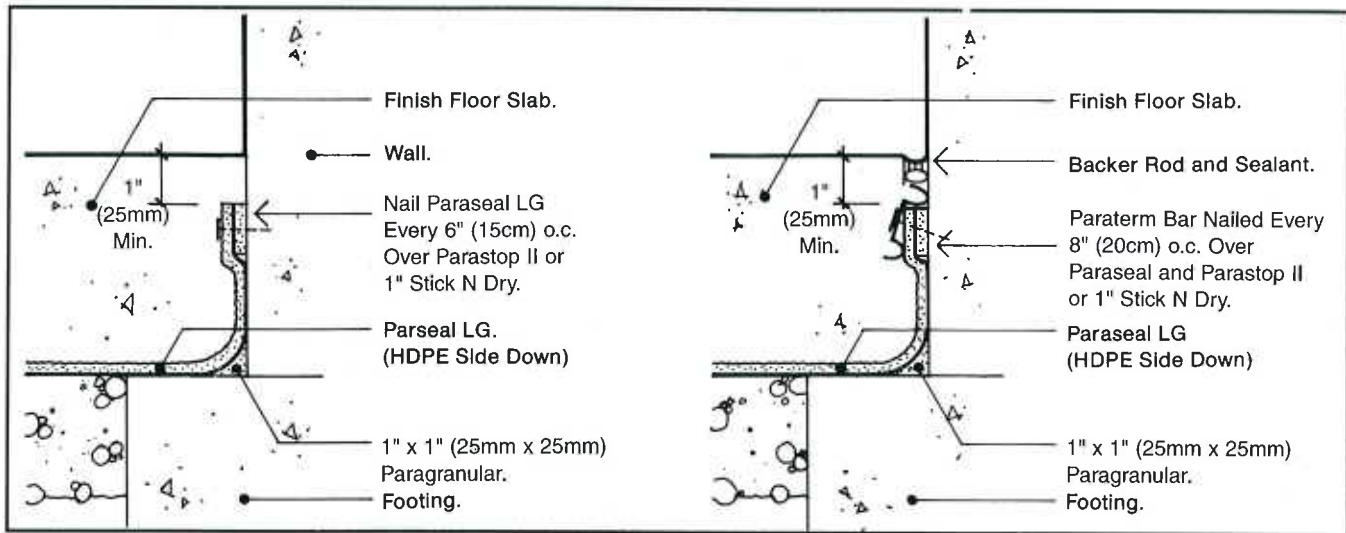


DETAIL 6: Tie-In Between Blindside Wall and Mat Slab/Protection Slab.

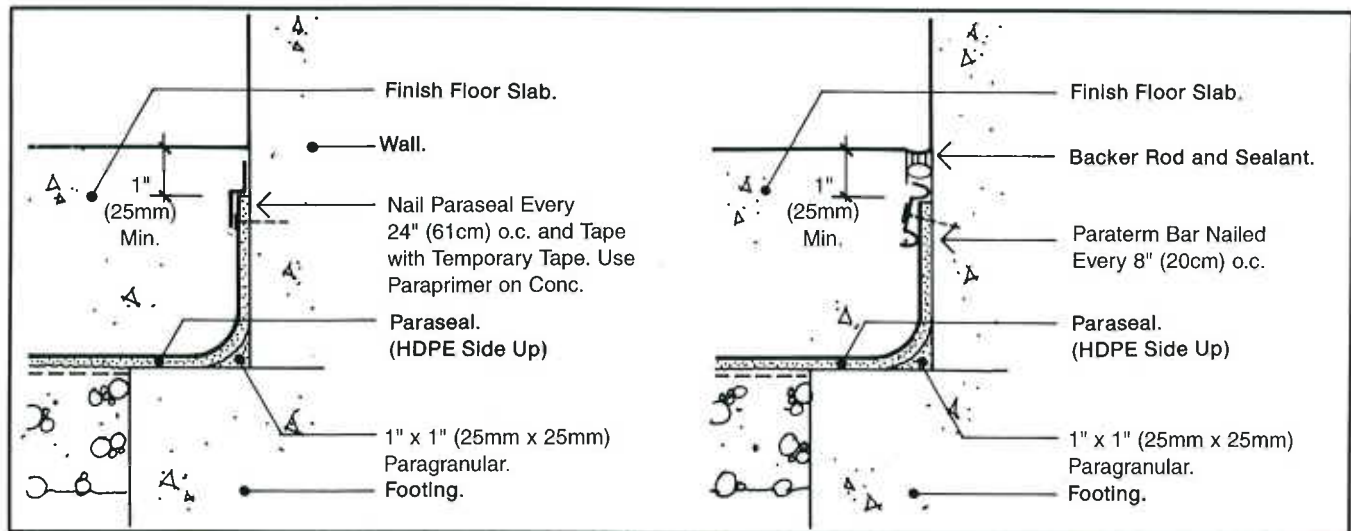
DETAILS



DETAIL 7: Tie-In Between Blindsided Wall and Below Floor Waterproofing.

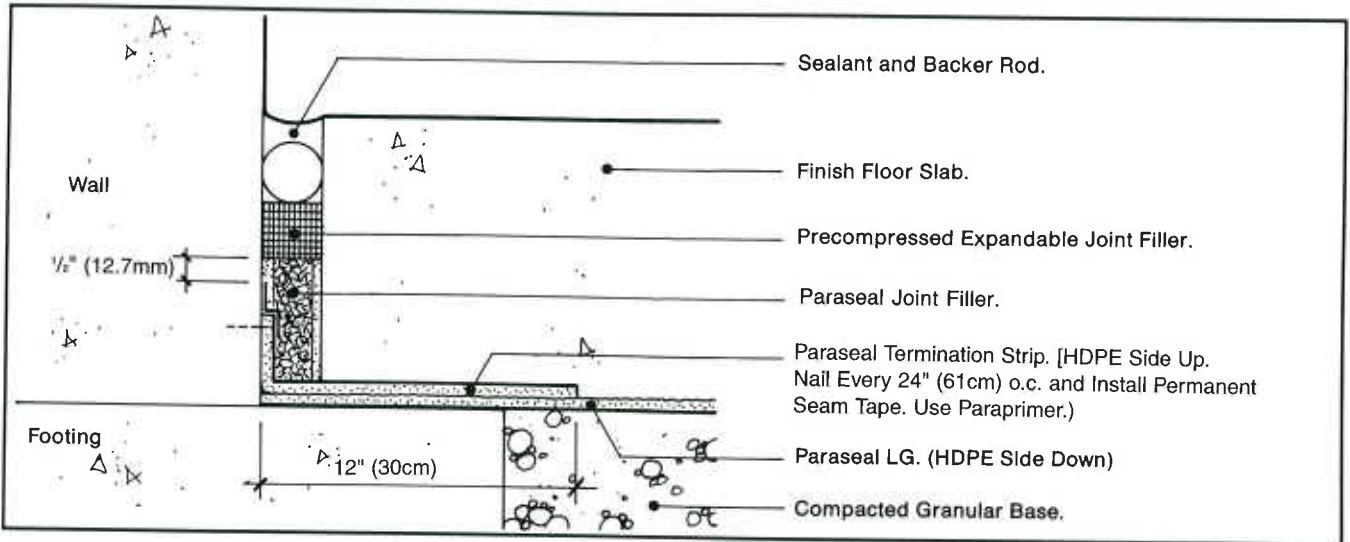


DETAIL 8: Termination at Floor to Interior Wall Face. - HDPE Side Down



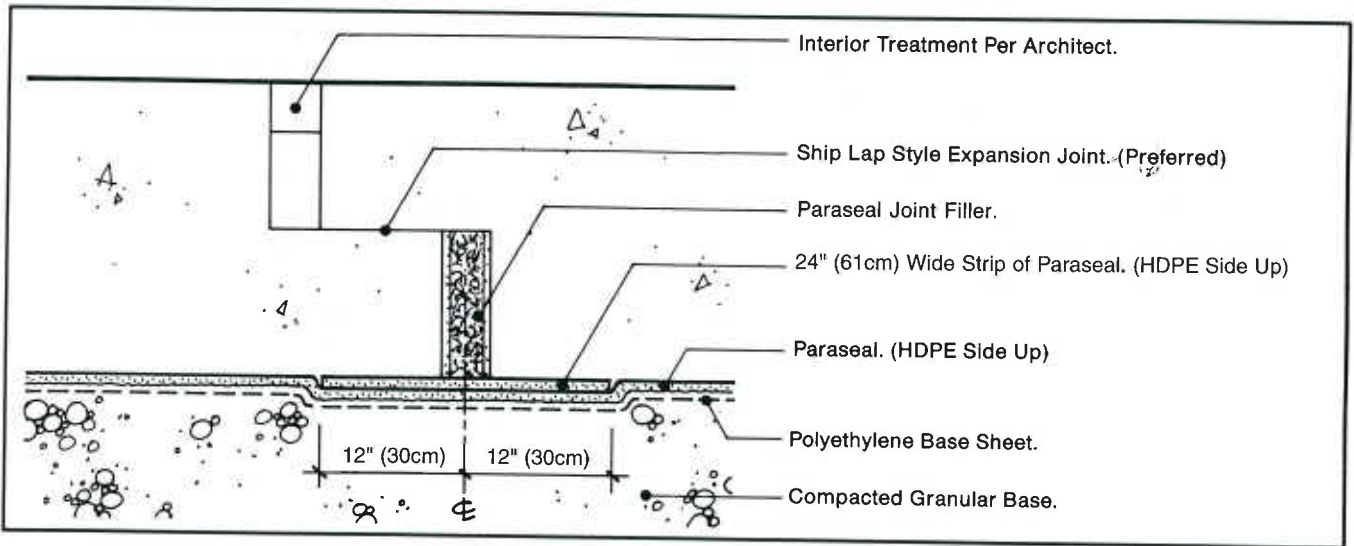
DETAIL 9: Termination at Floor to Interior Wall Face. - HDPE Side Up

DETAILS



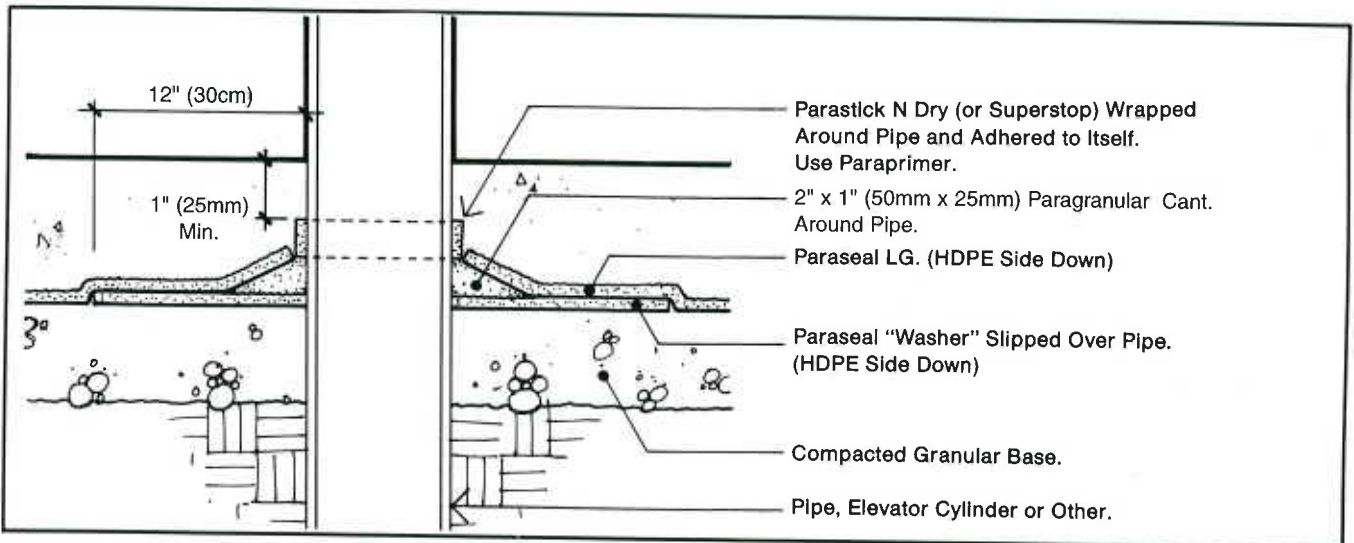
DETAIL 10: Floor To Wall Expansion Joint.

Note: MAMECO International, Inc. Makes No Warranty With Respect To Expansion Joints.



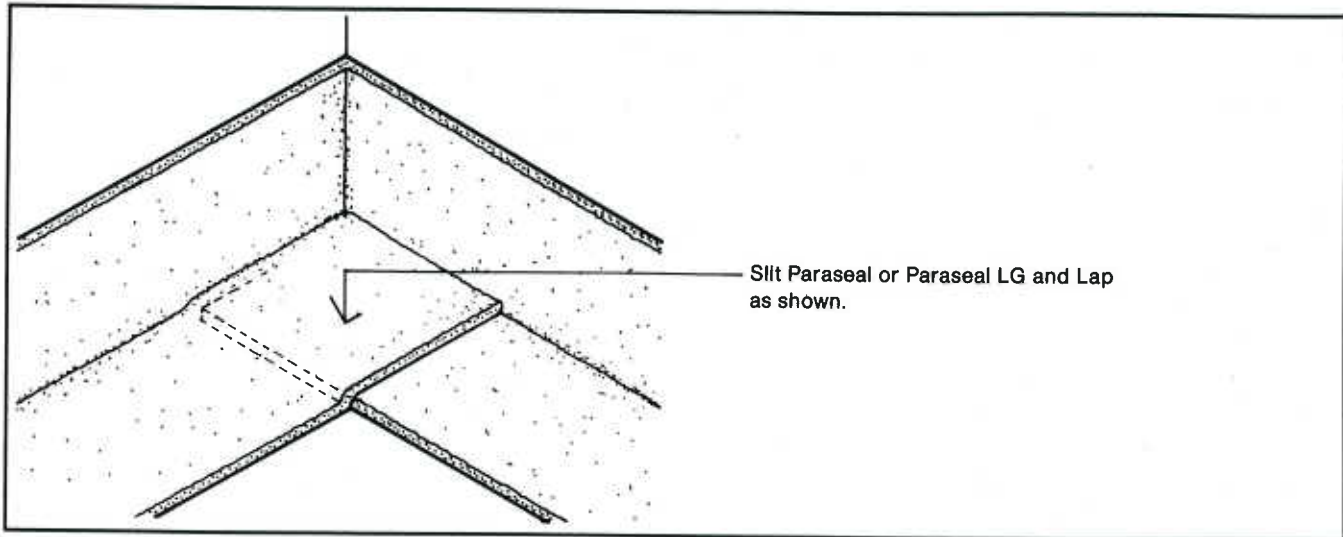
DETAIL 11: Mid Floor Expansion Joint.

Note: MAMECO International, Inc. Makes No Warranty With Respect To Expansion Joints.

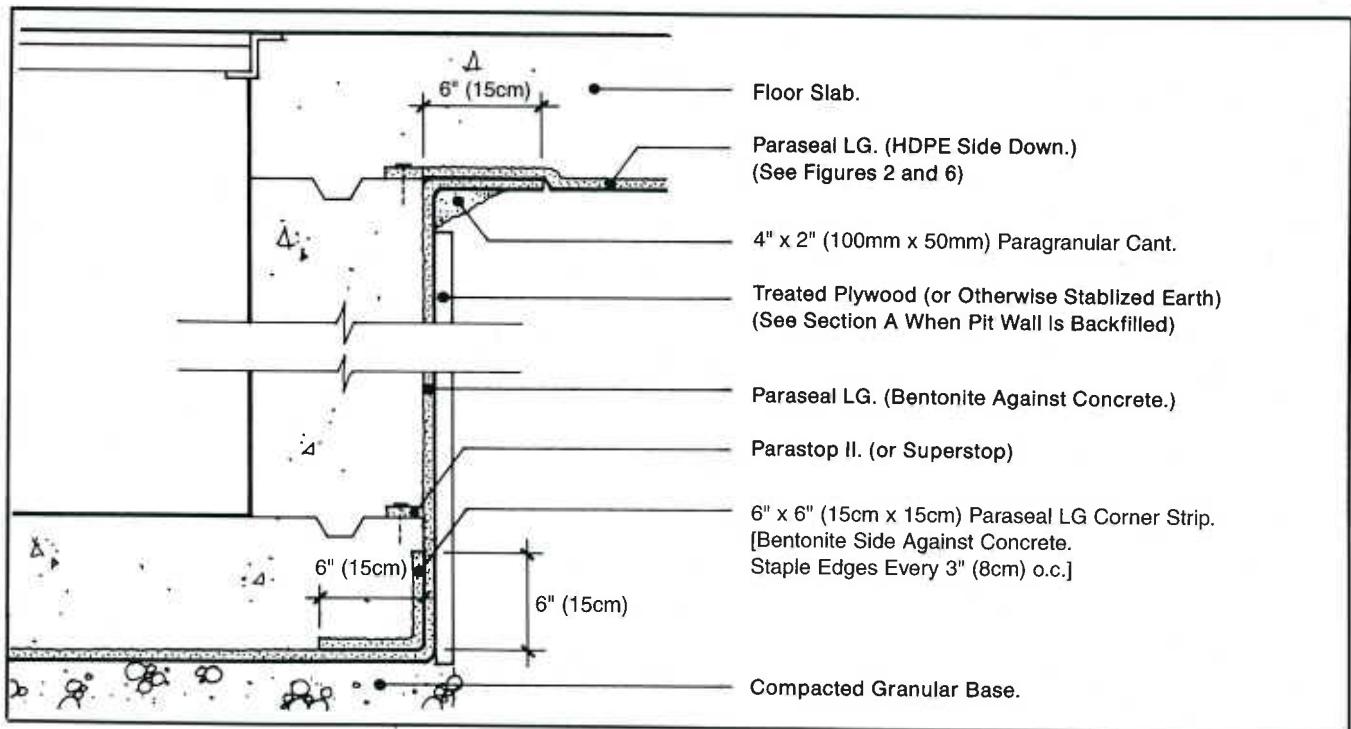


DETAIL 12: Thru Floor Penetration (Cast-In-Place)

DETAILS



DETAIL 19: Typical Fold Detail at Below Floor to Wall Inside Corner.



DETAIL 20: Blindside Construction of Elevator, Sump, or Other Below Floor Pit.

This brochure is provided solely as an aid in determining correct preparation, installation requirements, and installation procedures. The brochure is not intended to establish product recommendations for any given installation. To the best of our knowledge the information contained herein is true and accurate at the time of issuance, but is subject to change without prior notice. Contact MAMECO International, Inc. to verify correctness of any applications not addressed herein.